



November Newsletter 2020

Diamond Valley Gem Club

clubrooms

Grace Park Cottage,

Corner of Henry and Duncan Avenue,

Greensborough, Victoria, 3088

P.O Box 335,

Greensborough, Victoria, 3088.

Phone: 03 9846 2335 Leigh Carbines

Website: www.diamondvalleygemclub.com.au

The Club fosters the interests of all people who are interested in the collecting, cutting and polishing gemstones, lapidary work, in addition with all associated arts, crafts and activities.

CLUB TIMES.

Monday: 7.30 – 9.30 pm

Tuesday: 10.30 – 3.00 pm

Tuesday: 7.30 – 9.30 pm

Thursday: 7.30 – 10.00 pm

Saturday: 1.30 – 4.30 pm



Inside this issue

Membership Message.....2

Linda Keay's pendant2

Kilkennie Diamonds3

Christmas event5

Leigh & Amrei's visit west6

New club rooms.....9

Calendar.....10

Monthly Notices

Monthly Meeting Minutes and Correspondences are on the Club Room Notice Board

Office Bearer

President: Leigh Carbines 03 9846 2335.

Treasurer: Keith Kerr 0409 504 021

Secretary: Robert Cooper 0418 392 861

Duty Officers

Monday: John Milner

Tuesday : Gary Benson/Robert Cooper

Tuesday Evening: John Milner

Thursday: Leigh Carbines/John Milner

Saturday: Douglas Ramsay/John Milner

Committee Members

Anne Brewster, Claire Gleeson (0409 511 751), Mike Griffin, Jaci Anderson, Gary Benson (9467 1174), Maureen Boyle, Neil Crammer (0419 021 221), Dawn Lee (9434 1512), John Milner(9439 5820), Roger Williams

Newsletter

Douglas Ramsay

(0411 105 031) douglas.ramsay1@optusnet.com.au

Membership Renewals 2020

Becoming a member is a great way to get involved in the club. Members between the age of 16 and 90 are included in our Public Liability Insurance and Personal Accident Insurance.

Joining Fee:
\$10.00 Annual Subscriptions:
First Adult:
\$40.00 Additional Adults: \$30.00
Under 15: \$15.00
Life Members: nil

Note, when renewing it is important to fill out the membership form, copies of which are available in the club room

I am interested in members who have a favorite piece they are willing to provide and discuss in the newsletter

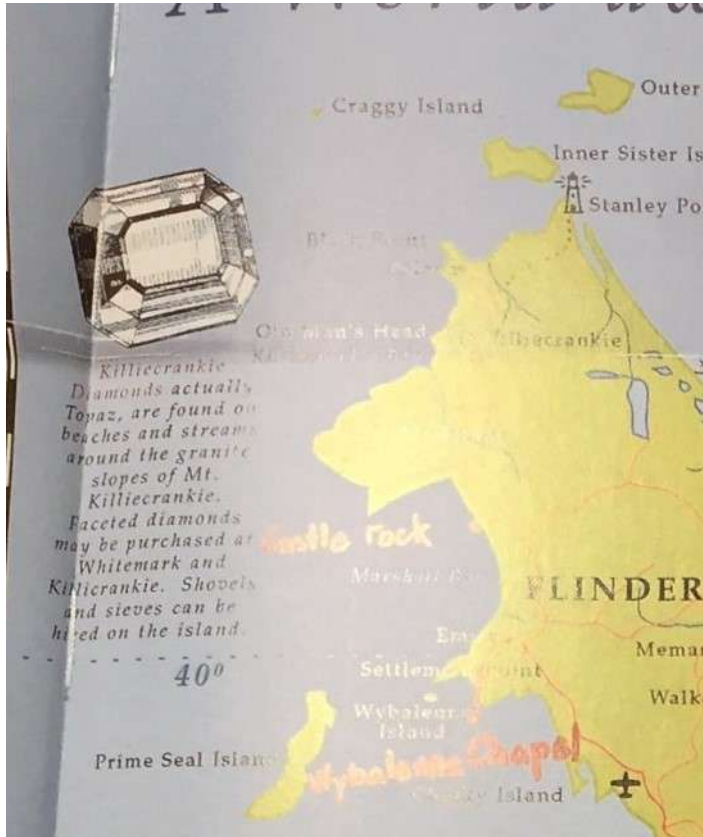
Linda Keay's pendant

Linda has provided some detail of a pendant she has made, the stones were both cut and polished at the club—Pendant, hand made, purchased chain, with sterling silver, 9ct gold, 18 ct gold, faceted smoky quartz, jasper with fossilised dinosaur bone, both stones cut at the Club.



Killecrankie diamonds

Keith Billing



On half a dozen occasions I have flown to Flinders Island which is part of the Furneaux group of islands located in the eastern side of Bass Strait, with a group of fossickers intent on finding Topaz. We would fly in, rent a 10 seater van and drive to the north of the island to Killiecrankie where we had rented a

house for the 5 days we were there.

Killiecrankie diamonds are actually clear topaz which people including myself believe to have such good clarity and fire to make them the best clear Topaz in the world. Originally when they were first discovered in the first half of the 1800s, because of their special clarity, they were mistaken for diamonds. The clarity has maintained and the name Killiecrankie Diamonds has also stuck with them ever since.

There are reports of these stones being obtained from a number of locations on the island, however these days there are two main locations where they are found, one in a small inlet on the northern end of Killiecrankie Bay, and another in a small inlet on the southern end of the bay at Little Boat Harbour which the locals call "The Slipway" which was originally used by local fishermen to pull their boats up into and out of the water to clean the barnacles off them.

Editors comment

Folk

Hi, it's Douglas Ramsay Here. I have taken over the editing of the newsletter. I would like to interview members about their experiences, and interests, to add some spark to the newsletter, If anyone wishes to volunteer, please contact me on 0411 105031

Field trip Ethics

- You must have a Current Victoria Miner's Right.
- Before entering private property, be it grazing, farming, mining, quarrying etc, permission must be obtained from the owner, lessee, manager or other responsible person, for prospecting, mining, collecting gemstones or camping.
- When permission has been obtained, members will obey any direction, restriction, order, advice or precaution given by the person in charge of the property.
- Ensure that gates of properties are left as found, shut or open.
- Stock, including domestic animals, are not to be interfered with under any circumstances.
- Firearms and explosives shall not be taken on field trips.
- Do not take pets on field trips.
- Leave an area as you find it. Fill in all holes and remove all litter. Be sure that gutters and drains are clear.
- Do not dig in banks of streams.
- Do not dig in or foul streams which are part of a water catch-

Killecrankie Diamonds—cont.

ment area.

- Do not damage or undermine trees or other vegetation.
- Keep off crops and tilled land unless permission is granted. Use furrows to walk in if you must traverse tilled land.
- Do not remove excessive amounts of material. Take only enough for your personal use, not for commercial purposes.
- Extinguish all fires by covering them with soil. Don't chop trees to make your fire
- Use fallen and broken limbs. Do not light fires when restrictions are in force, including TOTAL FIRE BAN DAYS.

A reminder that if you would like to fossick a “Miners Right” is required.

A Miner's Right allows the holder to search for, and take possession of, any mineral located on many areas of public land, or, on private land with the landholder's prior consent. Only basic non-powered hand tools (i.e. pick, shovel, sieve, etc.) can be used. This can be purchased online at <https://checkout.payments.com.au/minersRight/>

For information on fossicking in Victoria <https://parkweb.vic.gov.au/visit/popular-activities/fossicking>

The process of finding the Topaz is to dig down about 60 to 80 centimeters into the sand from the low water line, up to the high water line and possibly a little further. Then take a shovelful of the sand and sieve each shovel load in the water. The topaz crystals look like colourless jellybeans . The surface of the topazes is generally rough from being tumbled around out in the bay until they have been washed ashore and then because they are heavier than the sand they end up down at the lower levels of the beach.

There are a number of theories as to where they originally came from. One is that they have eroded out of the granite hills and washed down into the bay and then storms have washed them back into the locations where we find them now. Another is that there is a reef in the bay and they are washing out and then washing ashore. Personally I tend to subscribe to the second theory as I have never found any evidence of them in the streams leading down to the beach or any crystal shaped holes in the granite up in the hills.

During my visits I've found about 1000 carats and faceted a number of very nice stones of around 10 carats each ,the biggest piece was 60 carats and all but one have been clear ,the other being slightly blue. There is a private collection on the island that you can visit that contains some large blue uncut pieces which are 3 or 400 carats

Whether you are chasing topaz, or bush walking, fishing, paining, photography, or just relaxing and taking in the history of the island, I can thoroughly recommend the trip .

Christmas celebration



Christmas Party **Saturday 5th December 4 - 8pm** at **Contact Community Centre Annexe** **Bundoora Hall, Noorong Ave, Bundoora**

Please bring your own drinks (soft drinks provided)
and a plate of food to share,
BBQ available.

Note: For Covid safety shared food will be served to limit handling.
Disposable cutlery, plates, cups and glasses will be supplied.

Activities – Eat , Drink and be Merry
Surprise Gift and Quiz

We would love to see you

If you're not feeling well, we wish you all the best and hope to see
you in the New Year

If you're coming please ring Leigh 0499 233 500

Leigh and Amrei's trip West

In 2018 we headed west with our camper van. Our first rock stop was Cowell in SA to get some Jade. Then we stopped in Ceduna to visit family. After crossing the beautiful Nullarbor we spent one night in Esperance and followed the advice from a fellow traveller to turn East again to see Lucky Bay. Lucky Bay is only 63km away from Esperance and was definitely worth the detour!

Perth was our next stop to visit a friend and from there we went up the coast. As some, or many of you will know, the west coast is amazing. Our original idea was to travel right up to Darwin and come back through the centre. It wasn't meant to be, it got far too hot for Amrei. Never mind. We got to Monkey Mia where we had a swim with a dolphin and what looked first like a sculpture turned out to be a real pelican, oops.

From there we went inland to Tom Price, which seemed to be this little green oasis in the middle of red dust. After a couple of days there, also experiencing the footy Grand Final in the only pub with the locals, it was time to leave. We went south, first with a stop in Meekatharra and then further down towards Mount Magnet. At the local museum in Mount Magnet we met Karen Morrissey. She was an absolute gem! I only found out today while I am writing this, that Karen together with another local lady wrote a book about the history of Mount Magnet and surrounds.

Karen gave us Paul Jones' number. Paul and his wife Janet live in the old homestead of Boogardie Station. The size of Boogardie Station is about 374,000 acres in size (151.352 hectares), wow.

Anyway, Paul and his family are the only family owned station around the place and Paul was open to invite us to his home about 17km out of town. After a cup of tea he offered to show us a small part of his property.

The first thing we saw was

the smaller version of Woaran Rock, their local version of Uluru, which is very impressive. From there we finally came to the 'Pretty Rock Quarry'. I found the following article on the internet:

"[Pretty Rock quarry](#), the world's only site for [orbicular granite](#) of such high quality

It is quarried into large poker-dot slabs for feature walls, or collectors with access to a large crane and unlimited funds. For the rest of us mere mortals, we have to do with a specimen containing one orbicule. Orbicular granite is considered a very rare type of rock."

"The orbicules occur in a granodiorite-tonalite matrix, and consist of andesine (sodic plagioclase), hornblende, and biotite, arranged radially around a core of plagioclase and/or hornblende, or less commonly mafic schist.

The orbicules are formed by crystallisation from a fluid-rich supercooled dioritic magma nucleated on seed crystals. The orbicules appear to have settled under gravity while each was still a skeletal mesh of crystals, since the orbicules are frequently deformed or moulded against one another. The accumulation of orbicules depletes the magma in mafic elements, and increases the silica and fluid content, and the granite nature of the matrix. Biotite flakes cut primary crystals and are thought to be secondary.

The Boogardie orbicular granitoids are amongst the oldest known at 2700 million years."



Paul gave us generously a piece of this orbicular granite (certainly not as big as the one on the picture) and he also guided us to a mine site on his property where we found some dendritic opal.

After another night in Mount Magnet we drove via Leinster, Leonora and Menzies to Ora Banda, a tiny hamlet 1hr/85.6km from Kalgoorlie.

Here is some history about Ora Banda from 'Mindat.org':

"Ora Banda means 'band of gold' in Spanish. Gold was discovered in the area in 1893, and the town eventually gazetted in 1911. At this time, 2000 people lived at the site, with a commercial hub, which included the Huntington Mills Bank which was the largest in the southern hemisphere at the time. The still operating state battery was constructed in 1913, and the Ora Banda hotel in 1911. The hotel was restored and re-opened in 1981

Leigh and Amrei's trip West



They are the only two major historic buildings still standing. That Ora Banda didn't become completely a ghost town like so many others in the region, is largely because of the sheer amount of gold in the area. Frenzied recent activity has turned Ora Banda into part historical attraction, part mining camp.

The hotel has witnessed a violent episode in its recent history. In 2000, the hotel was owned and operated by former Criminal Bureau Investigation chief, Don Hancock. One night a group of Gypsy Joker Bikies was drinking at the pub. It is said, one of them, Billy Grierson, made an offensive comment to Mr Hancock's wife, and they were asked to leave. The bikies made camp across the road from the hotel. Later that night around the campfire, a shot rang out, and Billy Grierson was fatally shot dead.

Soon after the hotel was fire bombed, and severely damaged. The state battery, general store, and Hancock's Ora Banda home suffered a similar fate. In 2001, Don Hancock had moved back to Perth, where he was killed after a bomb planted under his car exploded. The hotel changed ownership and was re-built."

There were two reasons for us to go there: In Mount Magnet we learned that at Ora Banda, many (!) years ago, there was some pink opal to be found and Leigh was eager to find some, maybe. The second reason was the "Carbines Track" near Ora Banda. What we found was one pub and a few houses. As it was the weekend the locals gathered there for quite a few drinks. Closing time? Well, when the last person has left - which in fact can be surprisingly early like 10pm. I started talking to one of the farmers/Station owners there who turned out to live with his brother on the Carbines Track (too muddy for our camper to drive on though). Come Sunday morning one of the locals offered Leigh to show him the large area where the miners had stored all their core samples. Apart from experiencing quite an adventure with this local, Leigh came back with some of those samples, but he couldn't really take that much given that all of the rocks had to fit into the camper.

Glenn, who was in charge of the pub at the time, recommended we should see his friend in Kalgoorlie-Boulder. We thanked everyone and made tracks.

In Kalgoorlie we contacted Peter, or Pedro, who invited us to stay at his place in the backyard.

He was really an interesting sort of guy. He knew a lot about precious and semi-precious stones, and he was very willing to share his knowledge.

After visiting the Super Pit, very close to Pedro's home, we were guided to go to see the Rock shop in Coolgardie. It seemed to be a tiny shop, but they had a very big backyard. They had a lot of dendritic opal! So we brought a fair bit of this opal back home.

These were the most memorable Rock Stops on our trip. The final result of this trip was our Gem Club purchasing of ten barrels of dendritic opal, waiting to be cut and polished.

Amrei Bertelsmann

Mount Magnet is located 573 kilometres (356 mi) northeast of Perth via the Great Northern Highway.

The Jones family on Boogardie Station

The decision to update an historical booklet turned into a 10 year odyssey of research and learning for two Mount Magnet women. Karen Morrissey and Lorna Day have just finished a decade of studying Mount Magnet's past.

Leigh and Amrei's trip West

Paul and Janet Jones

Orbicular Granit quarry, Boogardie Station, Mount Magnet

Article from mindat.org

Located 19 kilometres west of Mount Magnet. A quarry here produces orbicular granite (actually granodiorite or tonalite) for ornamental stone.

The orbicules occur in a granodiorite-tonalite matrix, and consist of andesine (sodic plagioclase), hornblende, and biotite, arranged radially around a core of plagioclase and/or hornblende, or less commonly mafic schist.

The orbicules are formed by crystallisation from a fluid-rich supercooled dioritic magma nucleated on seed crystals. The orbicules appear to have settled under gravity while each was still a skeletal mesh of crystals, since the orbicules are frequently deformed or moulded against one another. The accumulation of orbicules depletes the magma in mafic elements, and increases the silica and fluid content, and the granite nature of the matrix. Biotite flakes cut primary crystals and are thought to be secondary.

The Boogardie orbicular granitoids are amongst the oldest known at 2700 million years.

[Pretty Rock quarry](#), the world's only site for [orbicular granite](#) of such high quality

It is quarried into large pocker-dot slabs for feature walls, or collectors with access to a large crane and unlimited funds. For the rest of us mere mortals, we have to do with a specimen containing one orbicule. Orbicular granite is considered a very rare type of rock.

Size of Boogardie Station is about 374,000 acres in size

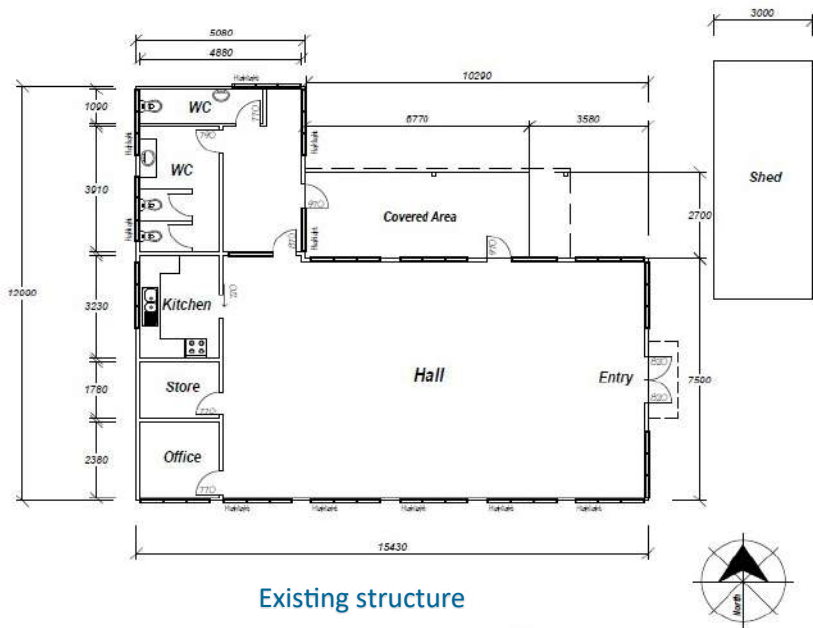
Woaran Rock, their local version of Uluru

Ora Banda, 1hr/85.6km from Kalgoorlie

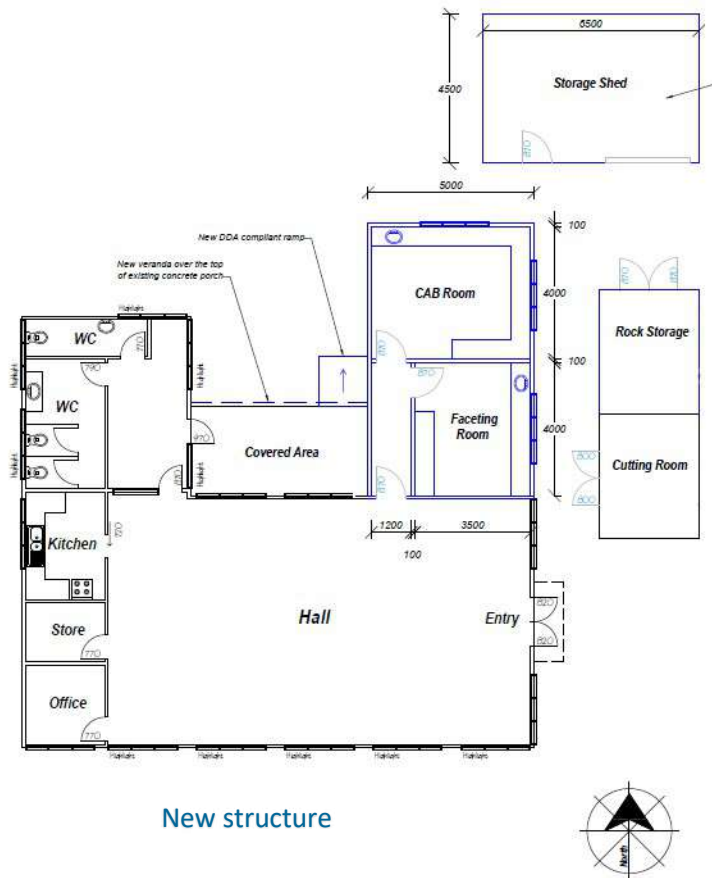
The new clubhouse

Work is proceeding on the new clubhouse. We have agreed on the layout that is needed, but we need to achieve funding. Cost estimates are for around \$200,000,

and design works to the point where ground can be broken are costed at \$20,000. The council has funded these works, but we will need to apply for grants to achieve the full build. Unfortunately we were not within the required timeframes for the present round of grants, but will apply when the next round is available



Existing structure



New structure

Calendar of events

2020		
December	5th	VGCA AGM, Venue TBC
Events for 2021 will be added as we know what COVID-19 restrictions will allow Clubs to do and we have notification from the Clubs		
January	11 - 14	Tucson Gem and Mineral Show has for the first time in 66 years been cancelled. For more information go to http://www.tgms.org/show
	19 - 22	Victorian Facetors' Group - Traralgon Workshop For details contact Secretary, Graham Sherar Phone: 0417 520 756 Email: secretary@victorianfacetorsgroup.com Or visit our Website: www.victorianfacetorsgroup.com
March	6 - 7	Victorian Gem Clubs' Show - Gemkhana. Venue TBA
May	14-17	Victorian Facetors' Group - Shepparton (Kialla) Workshop For details contact Secretary, Graham Sherar Phone: 0417 520 756 Email: secretary@victorianfacetorsgroup.com Or visit our Website: www.victorianfacetorsgroup.com
August	21-22	Ballarat Gem, Mineral, Crystal and Fossil Show (VENUE TO BE CONFIRMED)
November	14	V.G.C.A. Meeting,
	19-22	Victorian Facetors' Group - Marong (Bendigo) Workshop For details contact Secretary, Graham Sherar Phone: 0417 520 756 Email: secretary@victorianfacetorsgroup.com Or visit our Website: www.victorianfacetorsgroup.com
GEMBOREE 2021 Tasmania, 2-5 April		
GEMBOREE 2022 NSW, 15-19 April. Australian Rural Education Centre MUDGEE		
GEMBOREE 2023 QLD, 14-18 April. Hosted by QLACCA.		
GEMBOREE 2024 SA Hosted by GMCASA Dates to be confirmed		
GEMBOREE 2025 VIC Hosted by VGCA Dates to be confirmed		